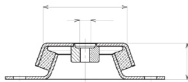
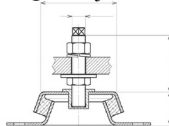


Standard



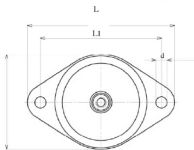
Style 2

Height-Adjustable



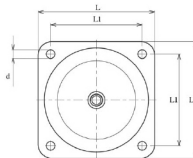
Style 3

Two-Hole-Flange



Design 1

Four-Hole-Square



Design 2



Part Number	Length x Height mm (Inch) (L) x (H)	Mounting hole (Inch) (d)	Hole Separation mm (Inch) (L1)	Thread size mm (Inch) (G)	Style	Design	Quality		Max. Static Compression Force (vertical)		Max. Static Shear Force (horizontal)	
							ShoreA Duro	Elastomer	kN	lbs	kN	lbs
PM128A	128 x 30 (5.04 x 1.18)	12.7 (.50)	105 (4.13)	M10	1	2	43	NR	1.10	247	1.34	302
2									57	2.20	495	
3									68	3.52	791	
PM128112				M12x1.5								
PM170A	170 x 39 (6.69 x 1.54)	12.7 (.50)	140 (5.51)	M12	1	2	43	NR	3.36	754	4.27	960
2									57	7.0	1,574	
3									68	11.20	2,518	
PM170013				M16x1.5								
PM170113												
PM216A	216 x 52 (8.50 x 2.05)	12x14 (.50x.55)	184 (7.24)	M16	1	1	43	NR	6.41	1,440	7.32	1,646
2									57	12.0	2,698	
3									68	19.20	4,316	
PM168A	168 x 52 (6.61 x 2.05)	12.7 (.50)	132 (5.20)	M16	1	2	43	NR	6.41	1,440	7.32	1,646
2									57	12.0	2,698	
3									68	19.20	4,316	
PM168011				M20x2								
PM168111												
PM184A	184 x 63 (7.24 x 2.48)	12.7 (.50)	150 (5.91)	M20	1	2	43	NR	12.51	2,811	14.34	3,223
2									57	23.50	5,283	
3									68	37.60	8,453	
PM168010				M20								
PM184110				M20x2								