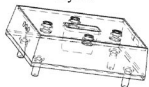




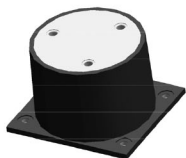
Style 1



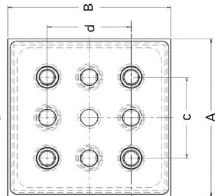
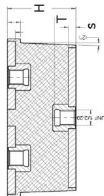
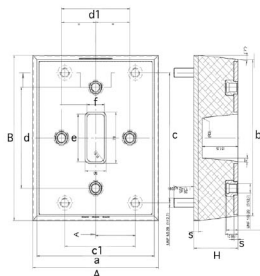
Style 2



Style 3



Style 4



Part Number	Length x Height mm (inch) (A) x (H)	Width (B)	Hole Separation mm (inch) (c)	Hole Separation mm (inch) (d)	Threads	Thread Length mm (inch)	Style	Quality		Max Static Compression Force		Max Static Shear Force	
								ShoreA Duro	Elastomer	kN	lbs	kN	lbs
A1305413001w	130 x 54 (5.12) x (2.13)	130 (5.12)	66.7 (2.63)	66.7 (2.63)	UNF1/2-20	-	2	43	NR	10.40	2,338	1.90	427
57								19.10		4,294	3.60	809	
68								31.0		6,969	5.80	1,304	
A13054130w	130 x 54 (5.12) x (2.13)	130 (5.12)	66.7 (2.63)	66.7 (2.63)	UNF1/2-20	28.8 (1.13)	3	43	NR	10.40	2,338	1.90	427
57								19.10		4,294	3.60	809	
68								31.0		6,969	5.80	1,304	
A130761001w	130 x 76 (5.12) x (2.99)	130 (5.12)	66.7 (2.63)	66.7 (2.63)	UNF1/2-20	-	2	43	NR	7.70	1,731	1.90	427
57								14.20		3,192	3.60	809	
68								23.0		5,171	5.80	1,304	
A10376130w	130 x 76 (5.12) x (2.99)	130 (5.12)	66.7 (2.63)	66.7 (2.63)	UNF1/2-20	28.8 (1.13)	3	43	NR	7.70	1,731	1.90	427
57								14.20		3,192	3.60	809	
68								23.0		5,171	5.80	1,304	
XX163201w	181 x 63.5 (7.13) x (2.5)	229 (9.02)	181 (7.13)	140 (5.51)	UNF1/2-20	-	1	43	NR	30.0	6,744	4.70	1,057
57								56.0		12,589	8.70	1,956	
68								91.0		20,458	14.10	3,170	
XX1632w	181 x 63.5 (7.13) x (2.5)	229 (9.02)	181 (7.13)	140 (5.51)	UNF1/2-20	28.8 (1.13)	1	43	NR	30.0	6,744	4.70	1,057
57								56.0		12,589	8.70	1,956	
68								91.0		20,458	14.10	3,170	
XX1526	152 x 114 (5.98) x (4.49)	-	114 (4.49)	88 (3.46)	UNF1/2-20	-	4	57	NR	21.0	4,721	4.70	1,057