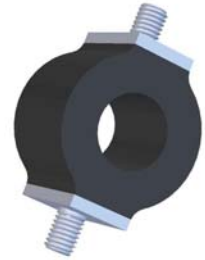


## Application

elasto-Special-Ring-Mounts are used for the protection of lightweight and low frequency equipment against active or passive vibrations and structure-borne noise. The unique design of the elasto-Special-Ring-Mount allows it to be used for shear and compression loads.



Size	Part No.	Compression Force				(D)		(H)		(B)		(b)		(G)	(L)		Tech Info	Elastomer	Shore A
		max. load [N]	[lbs.]	Spring Rate [N/mm]	[lbs/in]	mm	in	mm	in	mm	in	mm	in		mm	in			
14	XX1210	10	.22	5,5	1.0	14	.55	17,5	.68	12,7	.50	6,4	.25	M4	10	.38	<a href="#">Tech Info</a>	NR	43
	XX1211	40	.87	11	2.0	14	.55	17,5	.68	12,7	.50	6,4	.25	M4	10	.38	<a href="#">Tech Info</a>	NR	57
25	XX1216	16	.35	7,5	1.3	25,4	1.00	30	1.18	19,1	.75	11,1	.44	M5	14	.55	<a href="#">Tech Info</a>	NR	43
	XX1217	31	.67	15,5	2.7	25,4	1.00	30	1.18	19,1	.75	11,1	.44	M5	14	.55	<a href="#">Tech Info</a>	NR	57
35	XX1142	23	.50	22	3.9	34,9	1.37	38,1	1.5	25,4	1.00	15,9	.63	M6	15	.59	<a href="#">Tech Info</a>	NR	43
	XX1143	45	.97	45	7.9	34,9	1.37	38,1	1.5	25,4	1.00	15,9	.63	M6	15	.59	<a href="#">Tech Info</a>	NR	57