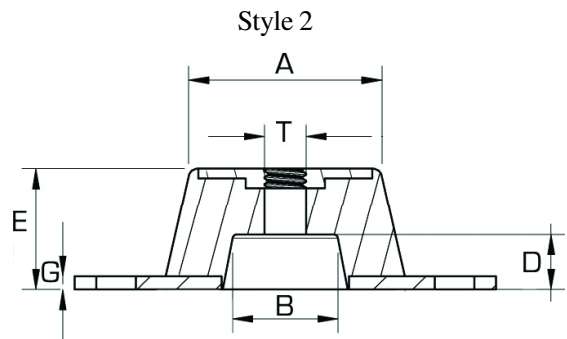
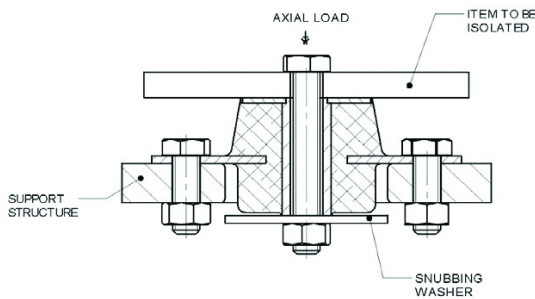
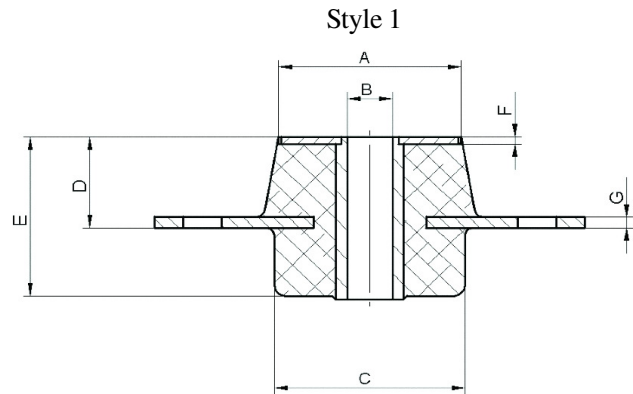
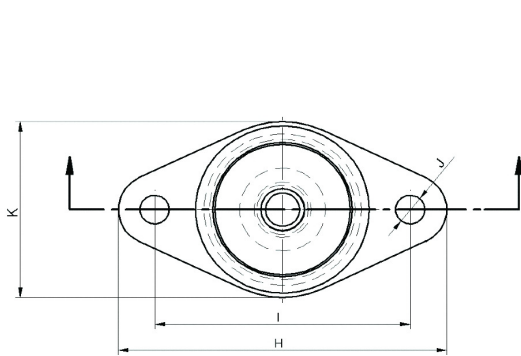


# Motor-Mounts



Part Number	Diameter x Height mm (Inch) (A) x (E)	Inner Diameter mm (Inch) (B) (T)	Hole Separation mm (Inch) (I)	Mounting Holes mm (Inch) (J)	Baseplate Thickness mm (Inch) (G)	Flange Length mm (Inch) (H)	Style	Quality  ShoreA Duro	Max. Static Compression Force (vertical)		Max. Static Shear Force (horizontal)	
									N	lbs	N	lbs
XX1564w	49 x 45 (1.93) x (1.77)	12 (.47)	88.9 (3.5)	10.3 (.41)	3 (.12)	114.5 (4.51)	1	43	800	180	420	94
57								1480	333	777	175	
68								2400	540	1260	283	
XX156401w	49 x 45 (1.93) x (1.77)	13.5 (.53)	88.90 (3.5)	10.3 (.41)	3 (.12)	114.5 (4.51)	1	43	800	180	420	94
57								1480	333	777	175	
68								2400	540	1260	283	
XX1565w	51 x 51 (2.01) x (2.01)	13.3 (.52)	34.4 (1.35)	13.9 (.55)	15.8 (.62)	119.2 (4.69)	1	43	1364	307	710	160
57								2523	567	1314	295	
68								4092	920	2130	479	
XX1583w	44 x 27.8 (1.73) x (1.09)	24 (M8) (.94) (*)	77 (3.03)	9 (.35)	3 (.12)	96 (3.78)	2	43	830	187	200	45
57								1536	345	370	83	
68								2490	560	600	135	

\*UNC Threads upon request