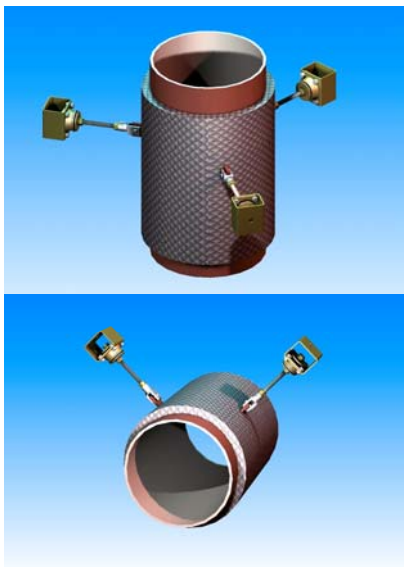
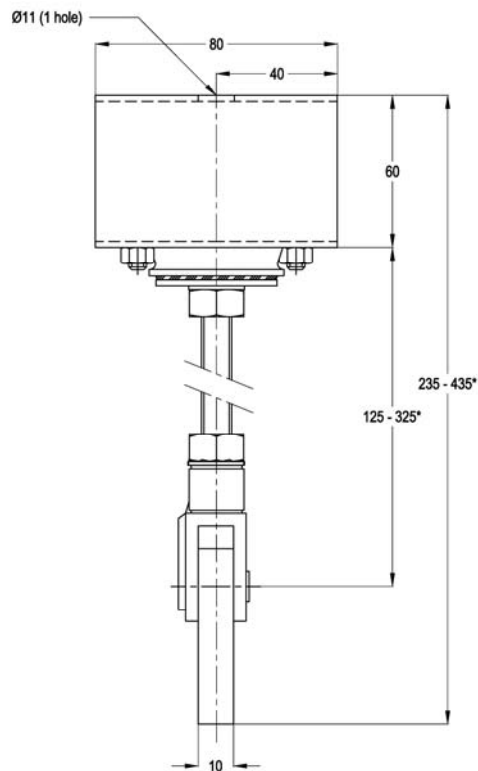
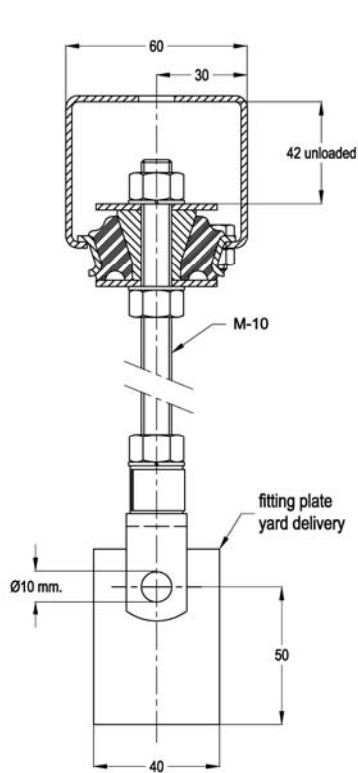
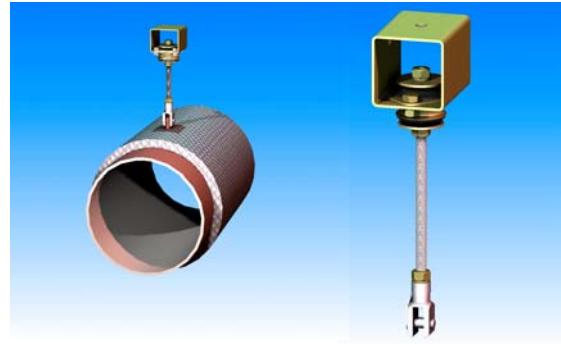


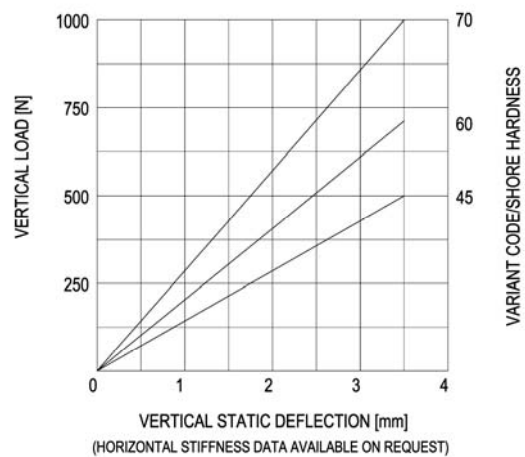
type HSA-100 Stabilizer

HSA-type Flexible Stabilizers are used to isolate and stabilize suspended pipe sections. Stabilizers can be applied in both horizontal and vertical direction and feature protection against complete loss of support in the event of mechanical or fire damage. Customers are recommended to contact our application engineers for further technical information on products and applications.

Load Capacity: 10 to 100 kg



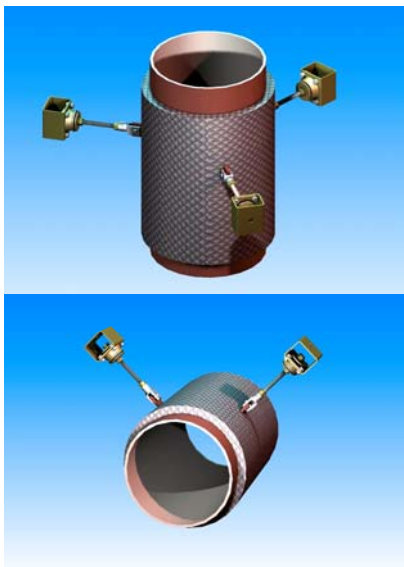
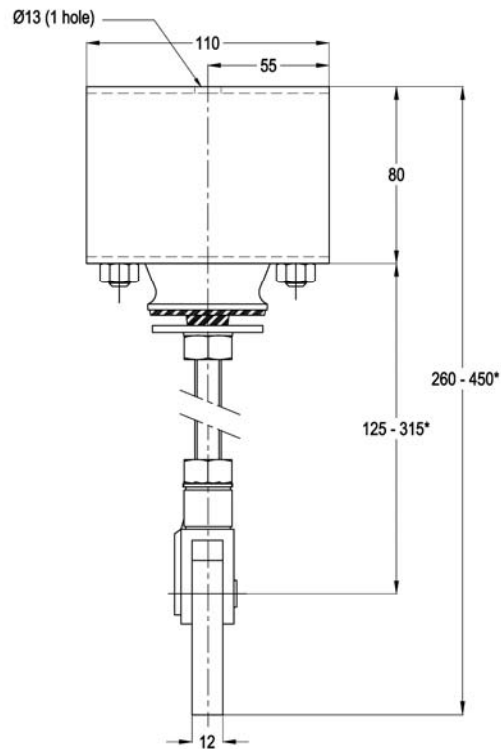
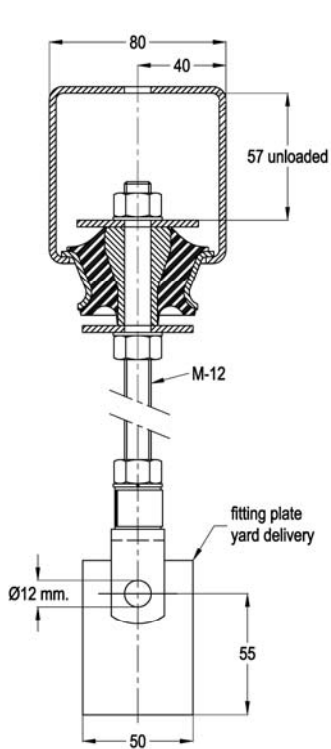
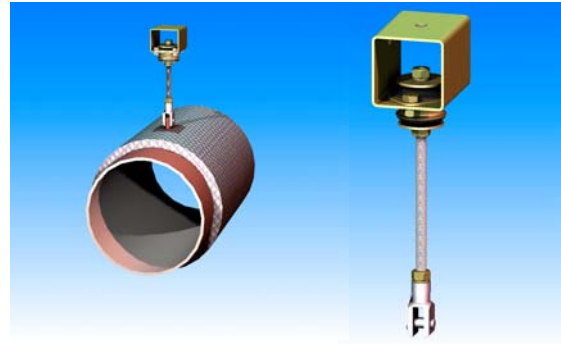
LOAD CHARACTERISTICS



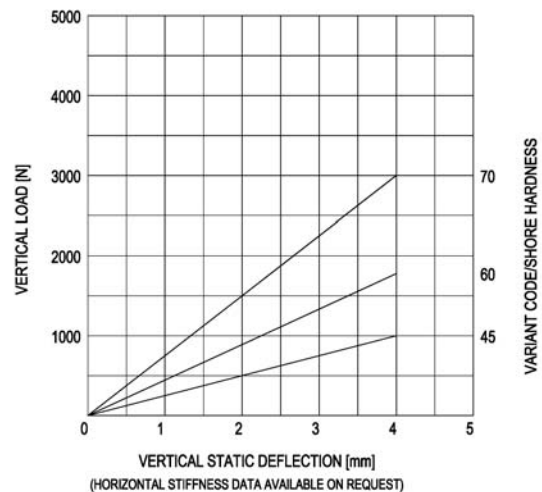
type HSA-300 Stabilizer

HSA-type Flexible Stabilizers are used to isolate and stabilize suspended pipe sections. Stabilizers can be applied in both horizontal and vertical direction and feature protection against complete loss of support in the event of mechanical or fire damage. Customers are recommended to contact our application engineers for further technical information on products and applications.

Load Capacity: 30 to 300 kg



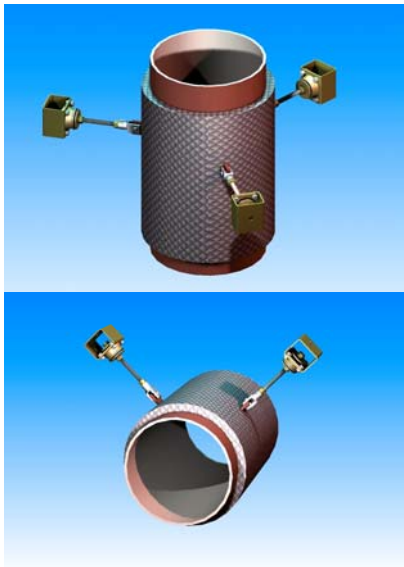
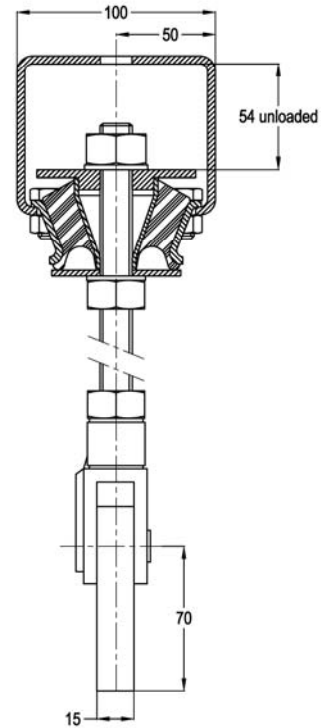
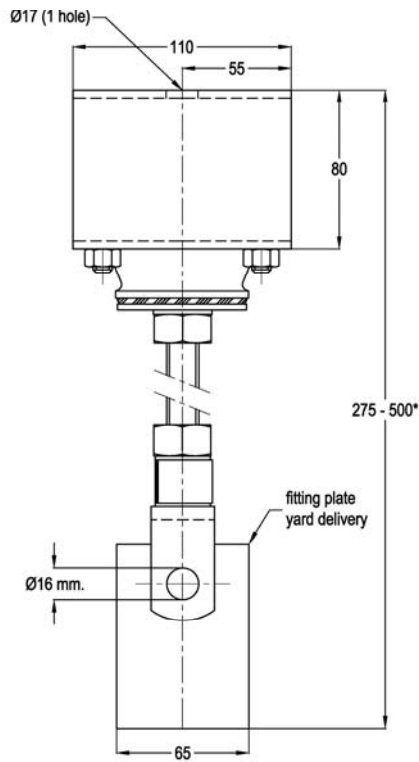
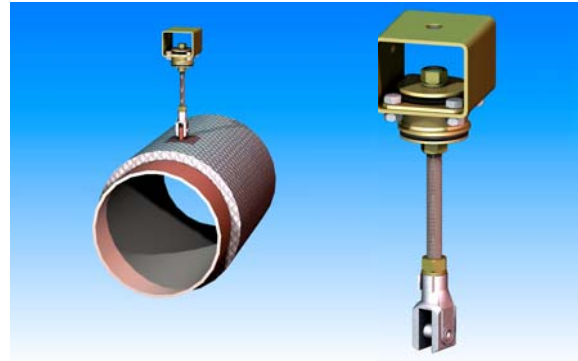
LOAD CHARACTERISTICS



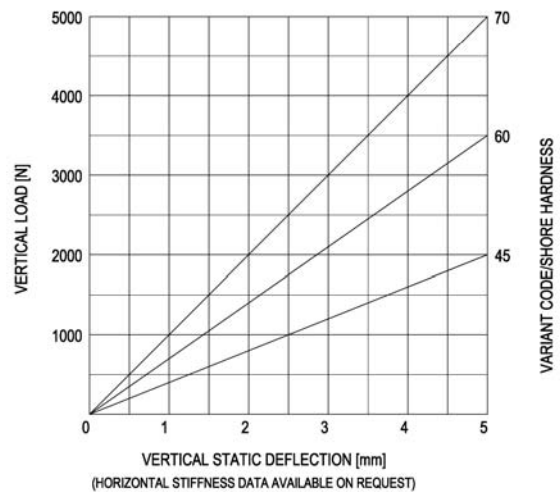
type HSA-500 Stabilizer

HSA-type Flexible Stabilizers are used to isolate and stabilize suspended pipe sections. Stabilizers can be applied in both horizontal and vertical direction and feature protection against complete loss of support in the event of mechanical or fire damage. Customers are recommended to contact our application engineers for further technical information on products and applications.

Load Capacity: 50 to 500 kg



LOAD CHARACTERISTICS



FFP/HFA/HSA– Installation Examples (1/1)

Guidance for using Exhaust Suspension Mountings

