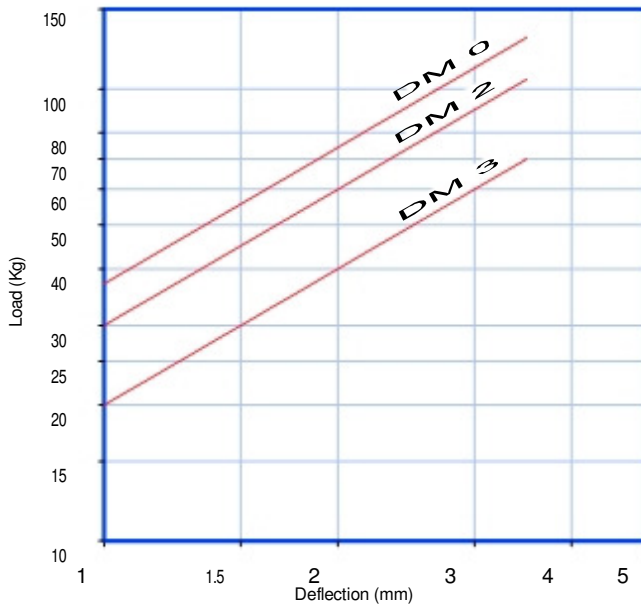


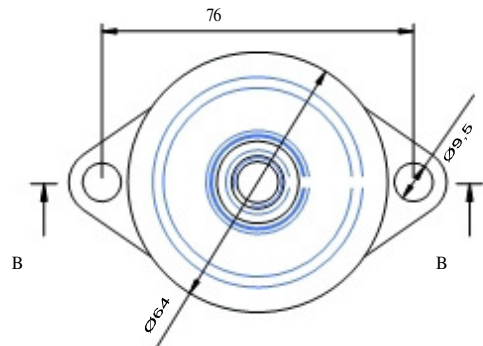
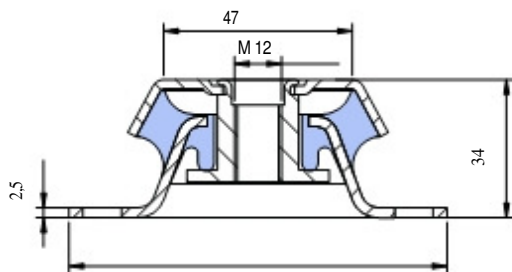
DM Mounts



LOAD DEFLECTION GRAPHS



Type	Load (kg)	Weight
0	130	238
2	105	238
3	70	238



DESCRIPTION

The DM-type mounts have similar architecture to the DH and DS. The advantage of this mount is that it is a high-damping elastic compound. Its special mix affords it a high degree of anti-vibration isolation and offers great stability to suspended equipment.

TECHNICAL CHARACTERISTICS

- Metal cover that protects the part from possible oil splashes.
- It has a zinc plate coating that protects the part from corrosion.
- They have an interlocking metal component that provides a fail-safe protection for mobile applications. This device limits the ascending vertical movement when the mounting is submitted to shocks at traction.

APPLICATIONS

This mount has been specially designed to insulate engines that produce high-amplitude vibrations. Engines from 1 to 3 cylinders, Motor Pumps, Gen Sets, Compressors, Ventilators...

WHEN IS IT USED?

The DM works as an anti-vibration mount but also as an engine stabilizer. This mount is used when conventional rubber metal mounts do not offer sufficient stability to the suspended equipment.

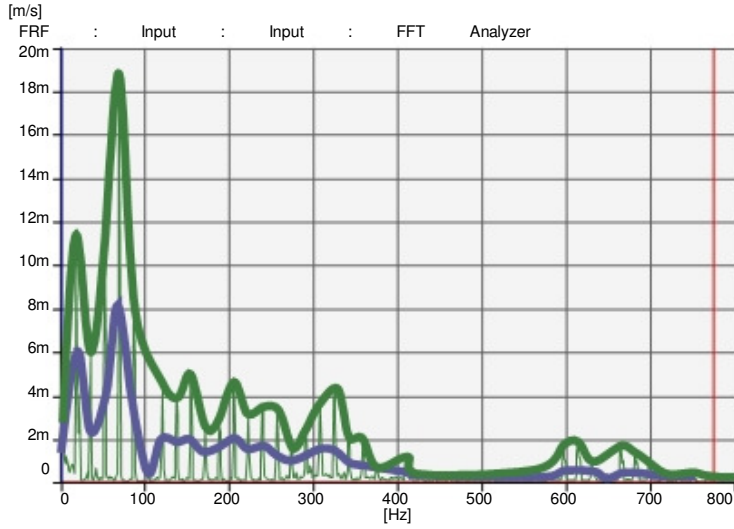
The DM is installed in small engines of 1, 2 and 3 cylinders which are particularly unstable.

These mounts are suitable for the suspension of machines which are started and stopped a lot and where the passage of resonance needs a high degree of damping or work in conditions which are close to the frequency of resonance of the system.

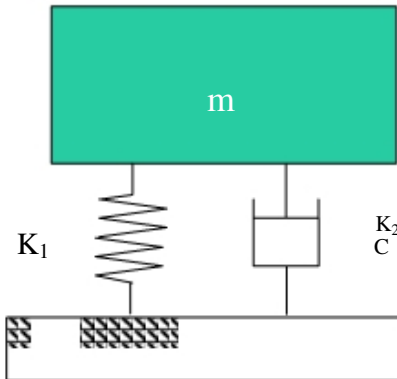
Diesel engines require DM mounts, particularly when they have few large-diameter cylinders, which makes the engine create high-amplitude vibrations, therefore requiring extra damping to correct these high amplitudes.

DM Mounts

Vibration level measured in the engine



— Natural rubber mount
— DM mount



K_1 = Main stiffness - K_2 = Secondary stiffness C = Damping coefficient - m = Mass



It is a very suitable mount for engines where it is not physically possible to install the antivibration mounts at the same height as the crankshaft.