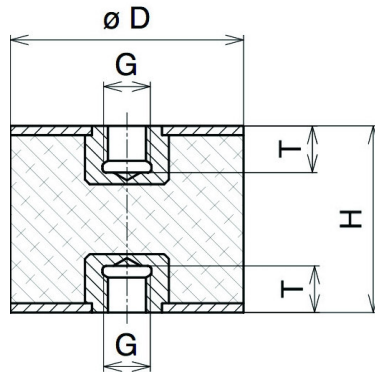
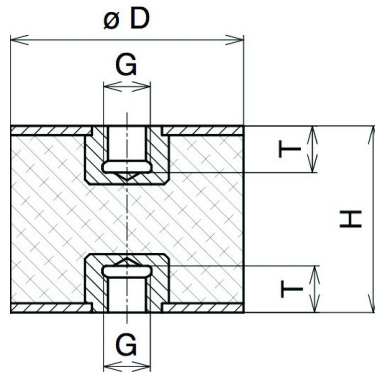


# C-UNF-Mounts



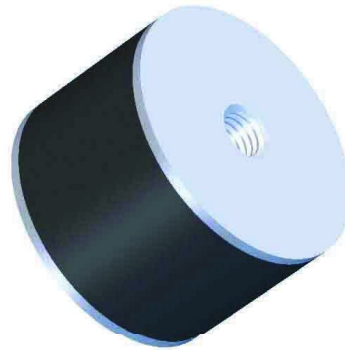
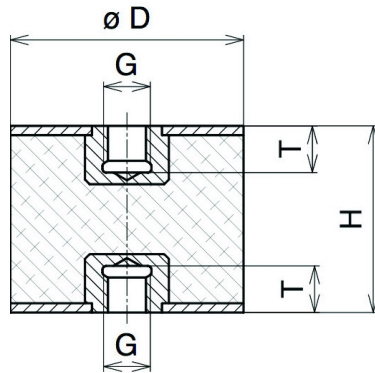
Part Number	Dia. x Height mm (Inch) (D) x (H)	Thread (G)	Depth mm (Inch) (L)	Thickness mm (Inch) (S)	Quality NR  ShoreA Duro	Compression				Shear			
						Max. Static Load		Spring Rate Ks		Max. Static Load		Spring Rate Ks	
						N	lbs	N/mm	lbs/in	N	lbs	N/mm	lbs/in
2025IF	20 x 25 (.79) x (.98)	UNF10-32	6 (.24)	2 (.08)	43	83	19	64	362	28	6	14	79
2025CF						154	35	118	669	52	12	26	146
2025MF						249	56	192	1085	84	19	42	237
2030IF	20 x 30 (.79) x (1.18)	UNF10-32	6 (.24)	2 (.08)	43	73	16	41	232	24	5	10	57
2030CF						135	30	76	429	44	10	19	105
3030MF						219	49	123	695	72	16	30	170
2525IF	25.4 x 25.4 (1) x (1)	UNF10-32	6 (.24)	2 (.08)	43	124	28	71	401	41	9	16	90
2525CF						229	52	131	742	76	17	30	167
2525MF						372	84	213	1204	123	28	48	271
5030IF	50 x 30 (1.97) x (1.18)	UNF3/8-24	10 (.39)	2 (.08)	43	603	136	251	1418	201	47	47	266
5030CF						1116	251	464	2624	372	84	87	491
5030MF						1809	407	753	4255	603	136	141	797
5035IF	50 x 35 (1.97) x (1.38)	UNF3/8-24	10 (.39)	2 (.08)	43	544	122	187	1057	181	31	39	220
5035CF						1006	226	346	1955	335	75	72	408
5035MF						1632	367	561	3170	543	122	117	661
5040IF	50 x 40 (1.97) x (1.57)	UNF3/8-24	10 (.39)	2 (.08)	43	505	114	149	842	168	38	33	186
5040CF						934	210	276	1558	311	70	61	345
5040MF						1515	341	447	2526	504	113	99	559
5045IF	50 x 45 (1.97) x (1.77)	UNF3/8-24	10 (.39)	2 (.08)	43	479	108	123	695	160	36	29	164
5045CF						886	199	228	1286	296	67	54	303
5045MF						1437	323	369	2085	480	108	87	492
5050IF	50 x 50 (1.97) x (1.97)	UNF3/8-24	10 (.39)	2 (.08)	43	459	103	104	588	153	34	25	141
5050CF						849	191	192	1087	283	64	46	261
5050MF						1377	310	312	1763	459	103	75	424
5075IF	50 x 75 (1.97) x (2.95)	UNF3/8-24	10 (.39)	3 (.12)	43	408	92	59	333	136	31	16	90
5075CF						755	170	109	617	252	57	30	167
5075MF						1224	275	177	1000	408	92	48	271

# C-UNF-Mounts



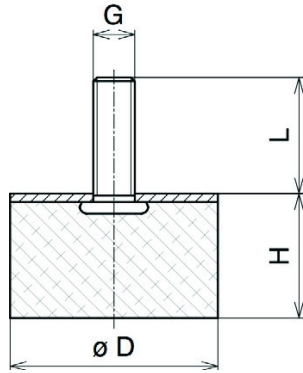
Part Number	Dia. x Height mm (Inch) (D) x (H)	Thread (G)	Depth mm (Inch) (L)	Thickness mm (Inch) (S)	Quality NR  ShoreA Duro	Compression				Shear			
						Max. Static Load		Spring Rate Ks		Max. Static Load		Spring Rate Ks	
						N	lbs	N/mm	lbs/in	N	lbs	N/mm	lbs/in
5035I13F 5035C13F 5035M13F	50 x 35 (1.97) x (1.38)	UNC1/2-20	12.7 (.5)	3 (.12)	43 57 68	544 1006 1632	122 226 367	187 346 561	1057 1955 3170	181 335 543	31 75 122	39 72 117	220 408 661
5040I13F 5040C13F 5040M13F	50 x 40 (1.97) x (1.57)	UNC1/2-20	12.7 (.5)	3 (.12)	43 57 68	505 934 1515	114 210 341	149 276 447	842 1558 2526	168 311 504	38 70 113	33 61 99	186 345 559
5045I13F 5045C13F 5045M13F	50 x 45 (1.97) x (1.77)	UNC1/2-20	12.7 (.5)	3 (.12)	43 57 68	479 886 1437	108 199 323	123 228 369	695 1286 2085	160 296 480	36 67 108	29 54 87	164 303 492
5050I13F 5050C13F 5050M13F	50 x 50 (1.97) x (1.97)	UNC1/2-20	12.7 (.5)	3 (.12)	43 57 68	459 849 1377	103 191 310	104 192 312	588 1087 1763	153 283 459	34 64 103	25 46 75	141 261 424
5075I13F 5075C13F 5075M13F	50 x 75 (1.97) x (2.95)	UNC1/2-20	12.7 (.5)	3 (.12)	43 57 68	408 755 1224	92 170 275	59 109 177	333 617 1000	136 252 408	31 57 92	16 30 48	90 167 271
7045IF 7045CF 7045MF	75 x 40 (2.95) x (1.57)	UNC1/2-20	12.7 (.5)	3 (.12)	43 57 68	1461 2703 4383	328 608 985	457 845 1371	2583 4778 7748	487 901 1461	109 203 328	79 146 237	446 826 1339
7550IF 7550CF 7550MF	75 x 50 (2.95) x (1.97)	UNC1/2-20	12.7 (.5)	3 (.12)	43 57 68	1355 2507 4065	305 564 914	361 668 1083	2040 3774 6120	455 842 1365	102 189 307	68 126 204	384 711 1153
7555IF 7555CF 7555MF	75 x 55 (2.95) x (2.17)	UNC1/2-20	12.7 (.5)	3 (.12)	43 57 68	1246 2305 3738	280 518 840	297 549 891	1678 3105 5035	415 768 1245	93 173 280	60 111 180	339 627 1017
7560IF 7560CF 7560MF	75 x 60 (2.95) x (2.36)	UNC1/2-20	12.7 (.5)	3 (.12)	43 57 68	1179 2181 3537	265 490 795	251 464 753	1418 2624 4255	393 727 1179	88 163 265	54 100 162	305 565 915
7575HF38 7575BF38 7575LF38	75 x 75 (2.95) x (2.95)	UNC1/2-20	12.7 (.5)	3 (.12)	43 57 68	1035 1915 3105	233 430 698	158 292 474	893 1652 2679	345 638 1035	78 143 233	39 72 117	220 408 661
75100HF38 75100BF38 75100LF38	75 x 100 (2.95) x (3.94)	UNC1/2-20	12.7 (.5)	3 (.12)	43 57 68	955 1767 2865	215 397 644	110 204 330	622 1150 1865	318 588 954	71 132 214	29 54 87	164 303 492

# C-UNF-Mounts



Part Number	Dia. x Height mm (Inch) (D) x (H)	Thread (G)	Length mm (Inch) (L)	Thickness mm (Inch) (S)	Quality NR  ShoreA Duro	Compression				Shear			
						Max. Static Load		Spring Rate Ks		Max. Static Load		Spring Rate Ks	
						N	lbs	N/mm	lbs/in	N	lbs	N/mm	lbs/in
8050HF	80 x 50 (3.15) x (1.97)	UNC1/2-20	12.7 (.5)	3 (.12)	43	1567	352	419	2368	522	117	77	435
8050BF						2899	652	775	4381	966	217	142	805
8050LF						4701	1057	1257	7104	1566	352	231	1305
8057HF	80 x 57 (3.15) x (2.24)	UNC1/2-20	12.7 (.5)	3 (.12)	43	1423	320	321	1814	474	107	65	367
8057BF						2633	592	594	3356	877	197	120	680
8057LF						4269	960	963	5442	1422	320	195	1102
8075HF	80 x 75 (3.15) x (2.95)	UNC1/2-20	12.7 (.5)	3 (.12)	43	1225	275	196	1108	408	92	46	260
8075BF						2266	509	363	2049	755	170	85	481
8075LF						3675	826	588	3323	1224	275	138	780

# D-Bumpers



Part Number	Dia. x Height mm (Inch) (D) x (H)	Thread (G)	Length mm (Inch) (L)	Thickness mm (Inch) (S)	Quality NR  ShoreA Duro	Compression				Shear			
						Max. Static Load		Spring Rate Ks		Max. Static Load		Spring Rate Ks	
						N	lbs	N/mm	lbs/in	N	lbs	N/mm	lbs/in
0703N	7 x 3 (.28) x (.12)	M3	6 (.24)	1 (.04)	43	17	4	87	492	6	1	11	62
0703D					57	31	7	161	910	11	2	20	115
0703P					68	51	11	261	1475	18	4	33	186
0907N	9 x 7 (.35) x (.28)	M4	12 (.47)	1 (.04)	43	17	4	28	158	6	1	6	34
0907D					57	31	7	52	293	11	2	11	63
0907P					68	51	11	84	475	18	4	18	102
1010N	10 x 10 (.39) x (.39)	M4	10 (.39)	1 (.04)	43	18	4	21	119	6	1	5	28
1010D					57	33	7	39	220	11	2	9	52
1010P					68	54	12	63	356	18	4	15	85
1206N	12 x 6 (.47) x (.24)	M4	10 (.39)	1 (.04)	43	39	9	81	458	13	3	13	73
1206D					57	72	16	150	847	24	5	24	136
1206P					68	117	26	243	1373	39	9	39	220
1320N	13 x 20 (.51) x (.79)	M4	10 (.39)	1.5 (.06)	43	27	6	15	85	9	2	4	23
1320D					57	50	11	28	157	17	4	7	42
1320P					68	81	18	45	254	27	6	12	68
1506N	15 x 6 (.59) x (.24)	M4	13 (.51)	1.5 (.06)	43	85	19	213	1204	28	6	25	141
1506D					57	157	35	394	2227	52	12	46	261
1506P					68	255	57	639	3611	84	19	75	424
1508N	15 x 8 (.59) x (.31)	M4	13 (.51)	1.5 (.06)	43	61	14	102	576	20	4	17	96
1508D					57	113	25	189	1066	37	8	31	178
1508P					68	183	41	306	1729	60	13	51	288
1510N	15 x 10 (.59) x (.39)	M4	13 (.51)	1.5 (.06)	43	51	11	64	362	17	4	13	73
1510D					57	94	21	118	669	31	7	24	136
1510P					68	153	34	192	1085	51	11	39	220
1513N	15 x 13 (.59) x (.51)	M4	13 (.51)	1.5 (.06)	43	44	10	40	226	15	3	9	51
1513D					57	81	18	74	418	28	6	17	94
1513P					68	132	30	120	678	45	10	27	153
1515N	15 x 13 (.59) x (.51)	M4	13 (.51)	1.5 (.06)	43	42	9	32	181	14	3	8	45
1515D					57	78	17	59	335	26	6	15	84
1515P					68	126	28	96	543	42	9	24	136
2010N	20 x 10 (.79) x (.39)	M6	15 (.59)	2 (.08)	43	108	24	136	769	36	8	22	124
2010D					57	200	45	252	1422	67	15	41	230
2010P					68	324	73	408	2306	108	24	66	373